



Photographers go behind the scenes at 16 Paris architecture studios

Eleanor Gibson | 26 January 2017

[Leave a comment](#)

The [offices](#) of 16 Parisian architecture studios, including [Renzo Piano Building Workshop](#) and [Périphériques](#), feature in this set of images by photographers Marc Goodwin and Mathieu Fiol.

[Goodwin](#) and [Fiol](#), who are both from photography studio [Archmospheres](#), documented a wide variety of architecture offices in the French capital, from one with just two employees to another with 150.

As well as Renzo Piano's office, which occupies a former art gallery, and the monochrome offices of [Périphériques](#), they also visited the workplaces of [LAN](#) and Laisné Roussel.

Many of the spaces occupy adapted buildings, including a former printer of vinyl record sleeves and a scooter parking space. For instance, [Architecture-Studio](#)'s conservatory-like office previously belonged to a herbalist, and has a tree at its centre.

Elsewhere, glazed sliding doors open [Tanya Klyne](#)'s studio to an outdoor courtyard, while the walls of [Richez Associes](#)' office are cluttered with taxidermy.

For [Parc Architectes](#), the photographers captured details including a cobbled floor, plants and statues.

The images follow on from a series of photosets by Goodwin that document the studios of architects in different cities. He has previously visited the workplaces of [London architects](#) and [Nordic studios](#).

Take a look inside all 16 Paris architecture studios:

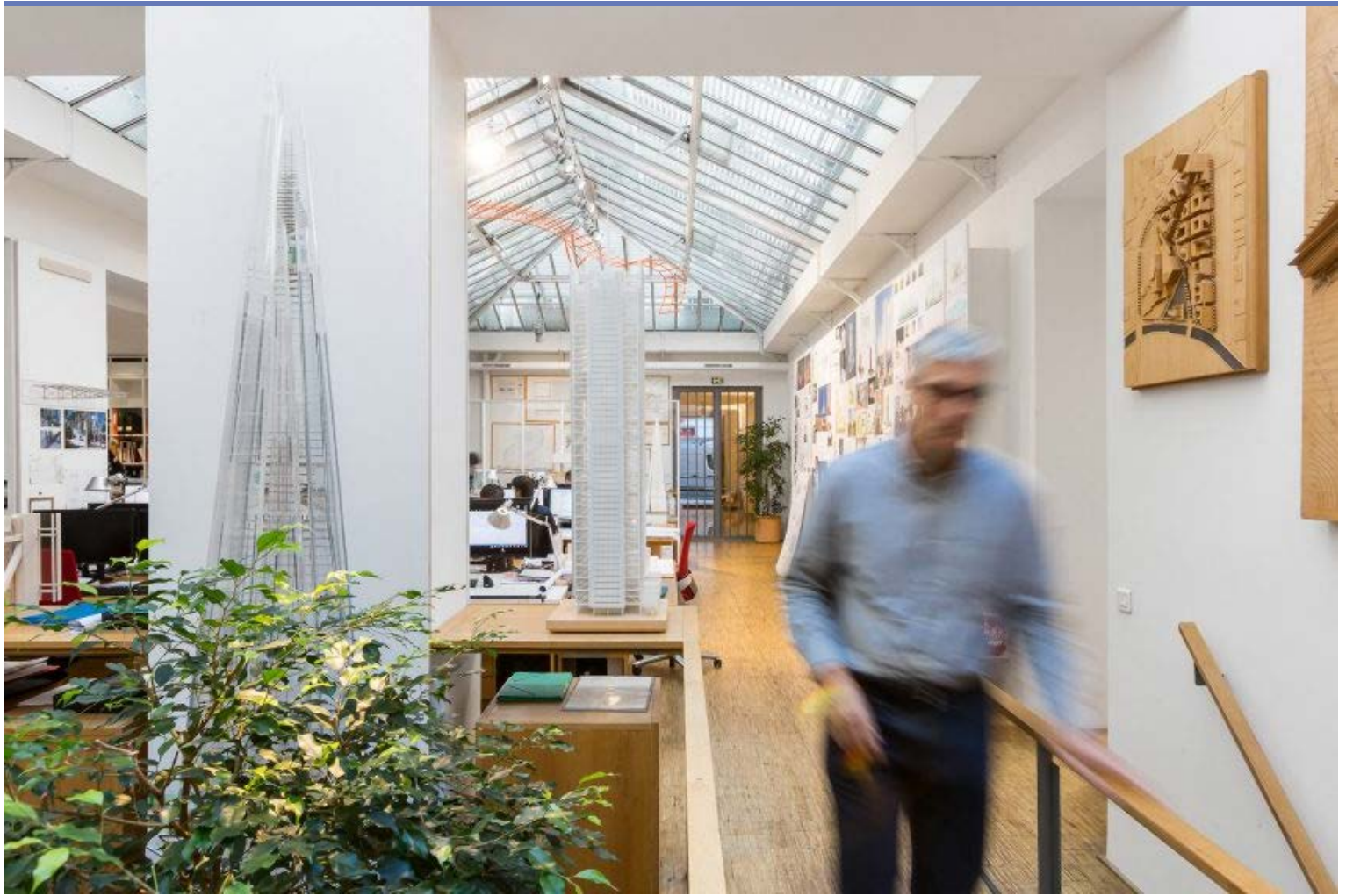


Architecture-Studio

In this space since: 1973

Number of employees: 150

Building's former use: herbalist

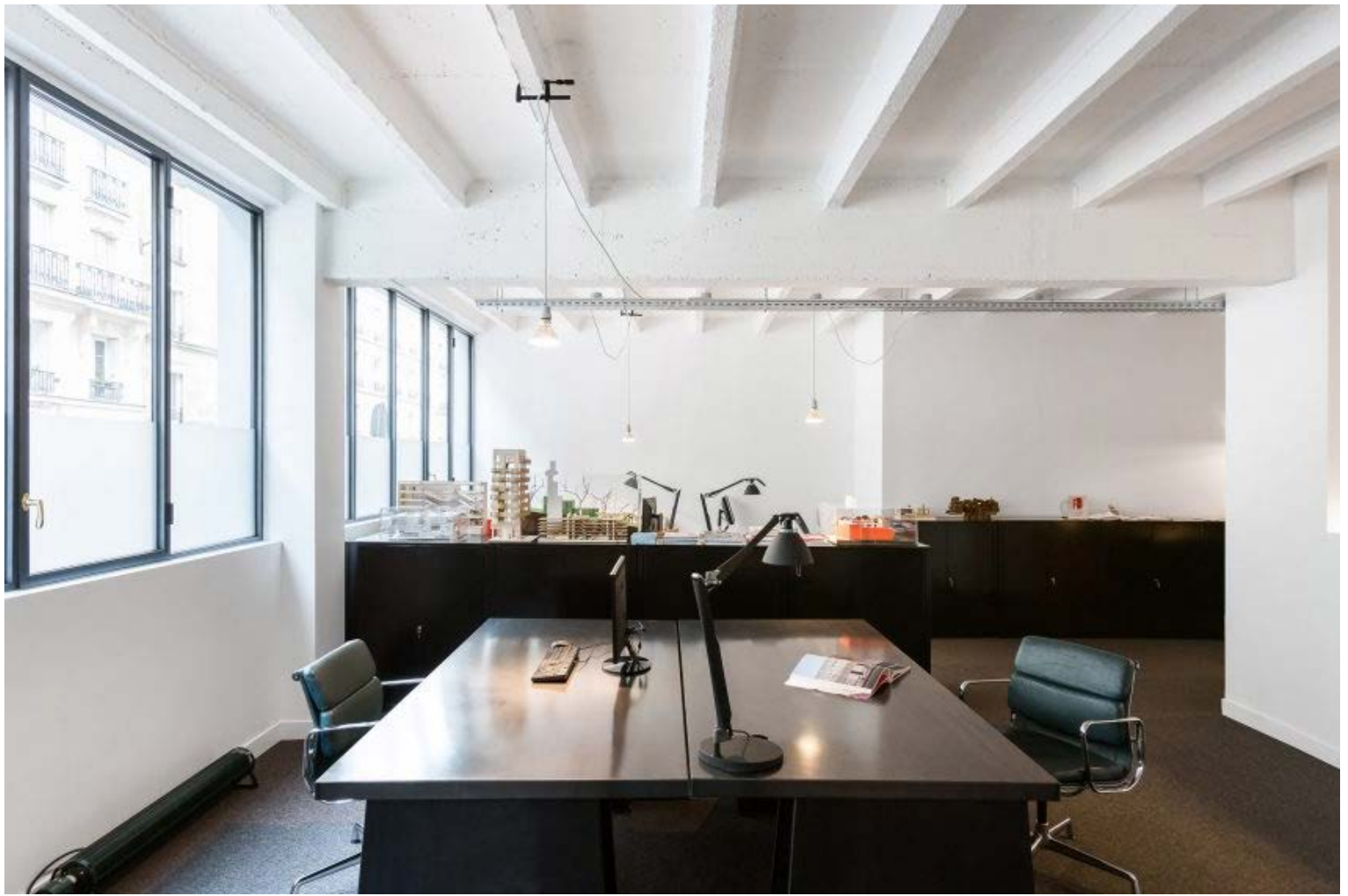


Renzo Piano Building Workshop

In this space since: 1992

Number of employees: 95

Building's former use: art gallery

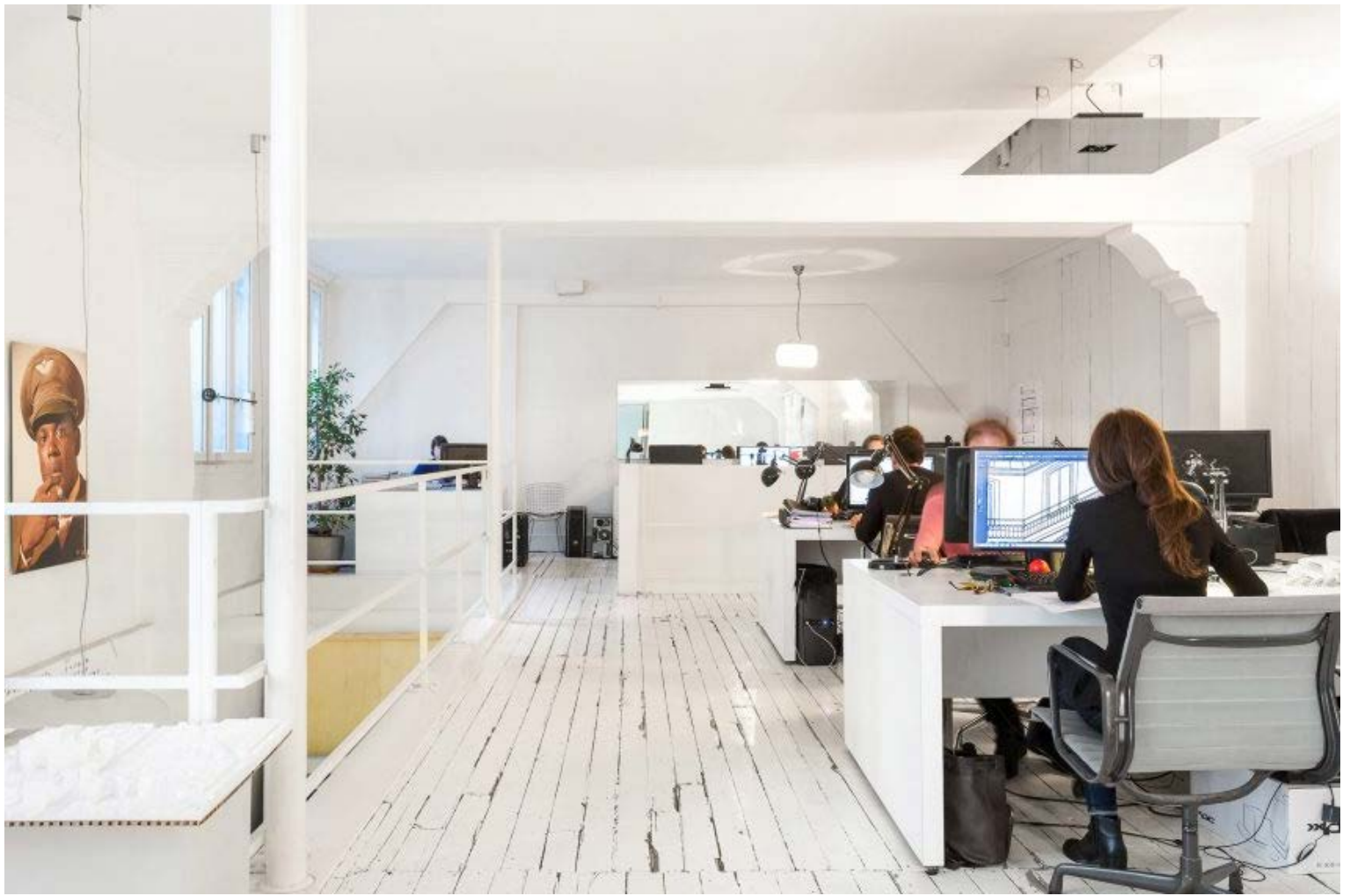


Périphériques/Marin + Trottin Architectes

In this space since: 2000

Number of employees: 15

Building's former use: metal tube merchant



LAN

In this space since: 2009

Number of employees: 27

Building's former use: clothing workshop



DATA

In this space since: 2016
Number of employees: 17
Building's former use: artists' loft

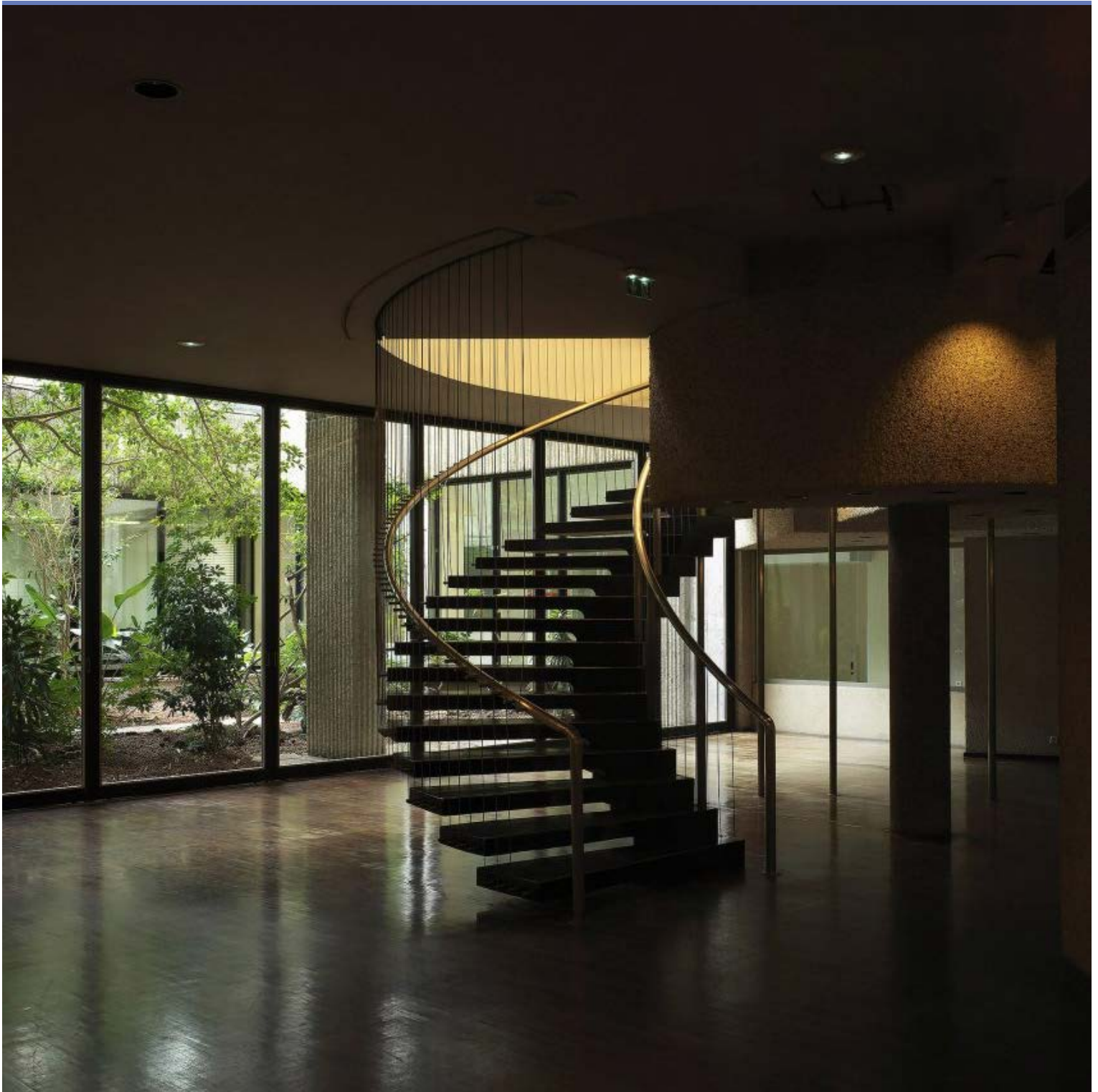


Laisné Roussel

In this space since: 2011

Number of employees: 28

Building's former use: joinery and later manufacturer of food colorant



Philippe Rizzotti Architecte

In this space since: 2016

Number of employees: 6

Building's former use: Centre International des Arts de la Table showroom



Richez Associes

In this space since: 2007

Number of employees: 72

Building's former use: office



Archi5

In this space since: 2006

Number of employees: 4 partners, 30 employees

Building's former use: printer of vinyl record sleeves



Nicolas Dorval-Bory Architectes

In this space since: 2011
Number of employees: 2
Building's former use: electricity shop



Martinez Barat Lafore architectes

In this space since: 2014

Number of employees: 2

Building's former use: private dwelling



Thomas Raynaud (BuildingBuilding)

In this space since: 2010

Number of employees: 5

Building's former use: private dwelling



Parc Architectes

In this space since: 2010

Number of employees: 2 partners, 8 employees

Building's former use: old printing house





Jean-Paul Viguiet et Associés, Architecture et Urbanisme

In this space since: 1995
Number of employees: 110

Building's former use: medical supplies warehouse



Tanya Klyne

In this space since: 2013

Number of employees: 2

Building's former use: scooter parking space



XTU Architects

In this space since: 2014

Number of employees: 15 to 20

Building's former use: office space